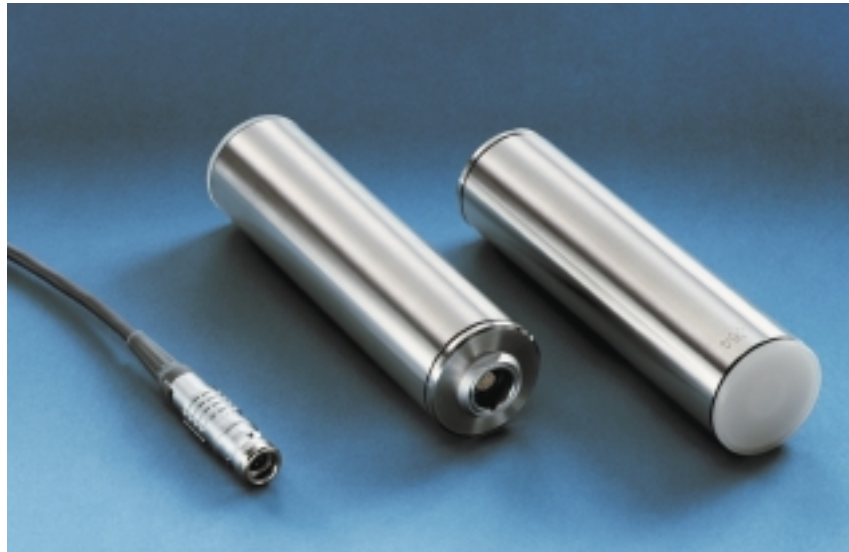


Photometer HG 34



Left: plug

middle: back view

right: front view

The photometer is an instrument used to determine the illuminance of a horizontal surface by the light from the sky. When used in connection with an automatic weather station, it is possible to observe cloud cover, even at night. The silicon photoelement, together with the built-in electronics, allows the photometer to be used for all

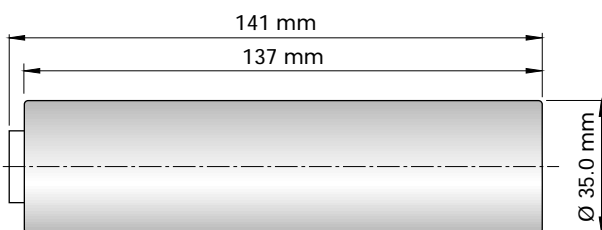
intensities ranging from starlight to direct sunlight. The temperature dependence of the silicon photoelement is compensated for.

The photometer is splash proof and housed in stainless steel. It can be set up in the open.

Technical Data

Measuring range	Logarithmic over 8 decades, approx. $0.5 \times 10E-3 \dots 10E5$ Lux
Upper limit of range	250 mW/cm ²
Spectral range of sensitivity	600...950 nm (3dB bandwidth)
Directional sensitivity	Cosine function
Power supply	7...13.8 V
Max. power consumption	18 mA
Typ. 24h average power consumption	9 mA
sensitivity	100 mV per decade
Output voltage range	0.2...1.0 V (1.0V= "bright")
operating temperature range	-30°C...+50°C
Weight	230 g
Connecting plug	mounted underneath

Dimensions



Details for Ordering

Photometer HG34

Accessories (order separately)

- Connecting plug
- Connecting plug with shielded cable approx. 5 m long

Meteolabor reserves the right to make changes without further notice